

Derbyshire Cricket Board

Development Plan

2003 – 2007

**Strategies, Action Plans and Minimum Quality
Standard Plans covering:**

Primary Schools

Secondary Schools

Clubs

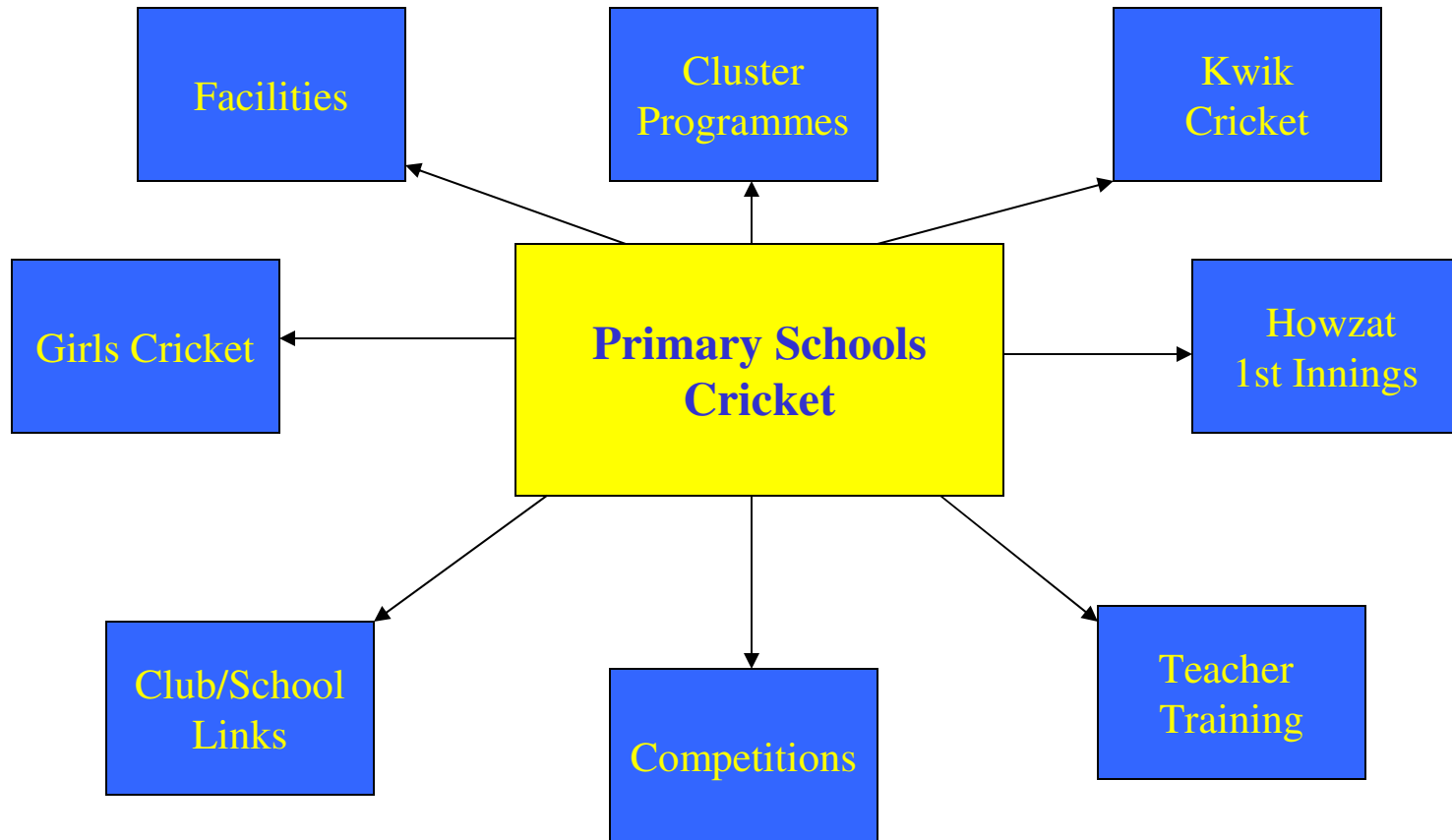
District Cricket

Representative Cricket

Costings Plan

Facilities Strategy and Action Plan

Derbyshire Cricket Board Primary Schools Cricket



Derbyshire Cricket Board Development Plan
2002 – 2007

Primary Schools

Aim: To provide the opportunity for every boy and girl, in primary schools, to be introduced to cricket through the provision of appropriate coaching, resourcing and teacher training.

| Strategy | Measurable Criteria | Responsibility | Cost | Timescale | Monitoring | Evaluation |
|---|---|---|---|---------------------------|-------------------------------------|--|
| 1. Introduce 'Howzat' into primary schools across the county through CDG's also providing teacher training. | Number of 'Howzat' packs distributed to schools / school visits 30 schools per year Number of coaching courses. Number of teachers trained – 30 per year | CDO, CDG's, SDO's | Approx £100 per school Teacher Training £200 per year | Start Spring 2003 ongoing | CDO on a yearly basis starting 2003 | Each autumn 2003 – 2007 |
| 2. Increase participation in National Kiwk Schools Cricket Competition | 5% increase year on year 2003 – 2007 2002 – 120 schools 2007 - 160 schools | SDO's and CDO in conjunction with CDG's and primary schools | £950 per year | Spring 2003 | CDO on yearly basis starting 2003 | Each autumn 2003 – 2007 |
| 3. Increase participation in National U11 Hardball Cricket Competition | Increase to 8 schools competing in 2003 rising to 20 by 2007 | CDO & primary schools | £50.00 | Summer 2003 | CDO Spring 2003 | Each Autumn 2003 –2007 |
| 4. Improve playing facilities at schools | Successful NOF bids / new facilities | County Forum & CDO | | October 2003 - 2007 | CDO Via P E advisor | Each Autumn 2003 – 2007. School to keep Flicx diary. |
| 5. Provide structured training for teachers to ensure they have the necessary skills to deliver cricket within the curriculum | Number of 'Howzat' INSET courses equalling 20 teachers per year trained | CDO/LEA/CDG's | | Annually from 2003 - 2007 | CDO on yearly basis from 2003 | Each Autumn 2003 – 2007 |
| 6. To increase the number of girls playing | One U11 girls Kiwk cricket tournament | CDG's / DCB / Schools | | July 2003 - 2007 | CDO / CDG's | Each autumn 2003 –2007 |

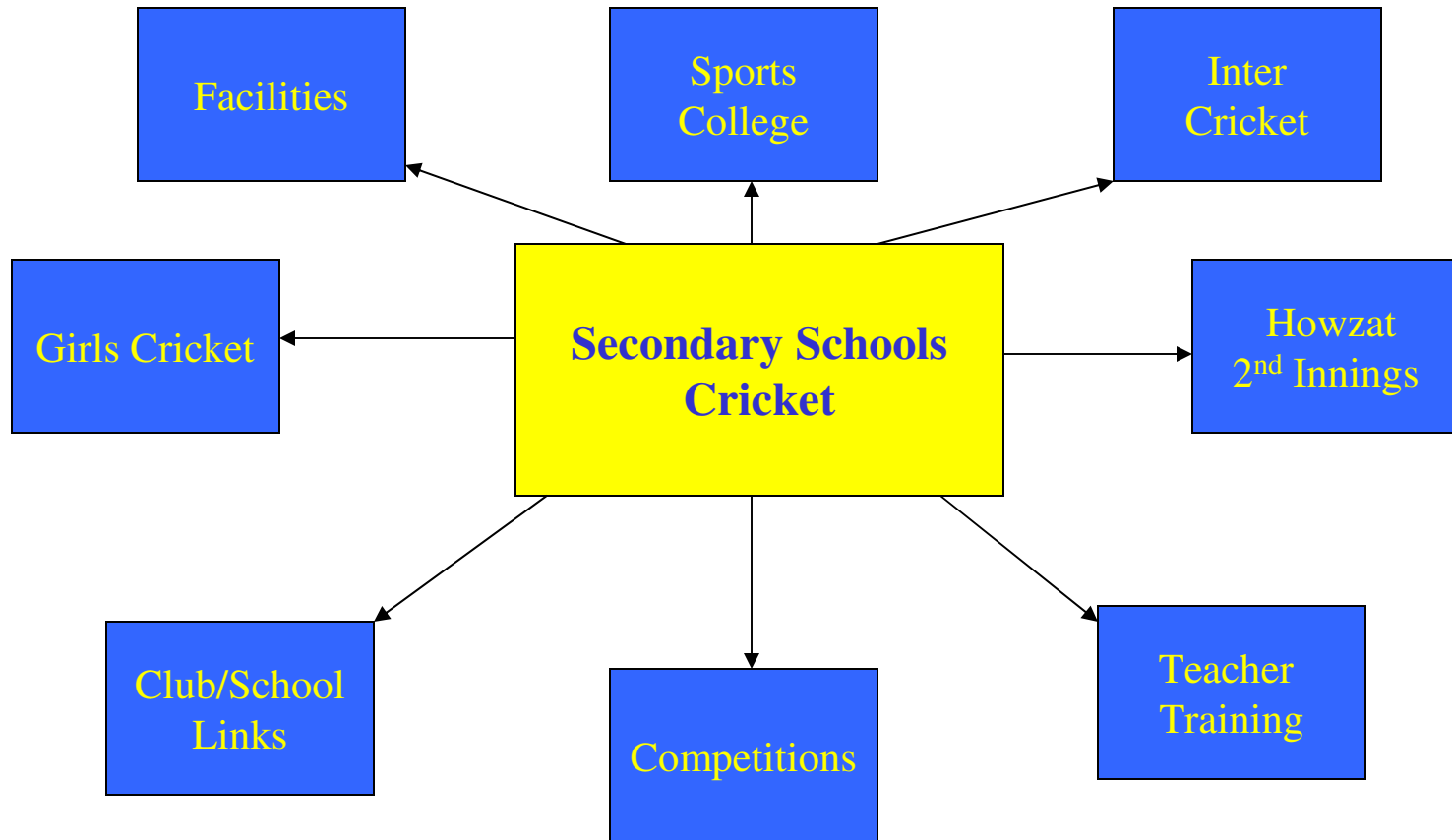
| | | | | | | |
|---|---|------------|------|------------------------------|------------------------|-------------------------|
| cricket in primary schools | organised at a club in each district and County final | | | | | |
| 7. To improve liaison with primary schools regarding cricket | Primary school representative to join CDG's – 2002 – 2 reps 2007 – 7 reps | CDG's | | Spring 2003 | CDG's | |
| 8. To improve the quality and delivery of cricket coaching in primary schools | Coaches working in primary schools to have taken ECB Coaching in Schools Module 2002 – 25 coaches 2007 – 70 coaches | CDO/DCB CA | £100 | Courses annually 2003 - 2007 | CDO annually from 2003 | Each autumn 2003 - 2007 |

Minimum Quality Standards

| Minimum Quality Standards | Current Situation | Gap | Priority |
|--|---|---|------------------------------|
| Club/School Partnerships These will be driven through District Cricket Development Groups with representation sought from schools on the groups | Take place on a needs led basis Some Primary School representation on CDG's at present | A coordinated approach to Club/School links through School/Sport partnerships | One partnership per district |
| Coaching Visits Coaching visits to primary schools to be by minimum Level 1 DCB CA coaches who have successfully completed the ECB Coaching In Schools Module using 'Howzat' 1st Innings resource | Coaching is being delivered by appropriately qualified coaches using 'Howzat 1 st Innings resource | | |
| Teacher Training | | | |

| | | | |
|---|--|---|---|
| ECB 4.5 hour Primary INSET Courses will be delivered by appropriately trained tutors to ensure quality delivery. This will involve the use of the 'Howzat 1st Innings' resource | Training takes place through the 'Howzat' coaching programme as teacher familiarisation and Primary Inset courses take place each year | | |
| Coach Training This will be delivered through the DCB CA Coach Education Plan | One course being delivered each year | | |
| Competitions Our aim is to build up entry levels of county and national competitions | 40% of schools compete in competitions | Certain schools never compete | Target schools via Club/School links, teacher training etc. |
| Facilities Improvement of playing surfaces by assistance with NOF bids and club links to share playing surfaces | Uncoordinated approach with some schools using club facilities | Coordinated approach through NOF bids | See facilities plan |
| Focus Clubs District CDG's to identify focus clubs for primary schools in their area | Uncoordinated approach | Coordinate approach via School/Sport partnerships | Target schools within School/Sport partnership areas |

Derbyshire Cricket Board Secondary Schools Cricket



Derbyshire Cricket Board Development Plan
2002 – 2007

Secondary Schools

Aim: To provide the opportunity for every boy and girl, in secondary schools, to develop their cricket skills through the provision of appropriate coaching, resourcing and teacher training.

| Strategy | Success Criteria | Responsibility | Cost | Timescale | Monitoring | Evaluation |
|--|---|-----------------------------------|--------------------------|-------------------|------------|-------------------------|
| 1. Promote 'Howzat 2nd innings' through the CDG's and coaching and provide teacher training | 9 2nd innings packs distributed. Increase to 18 in 2003 All secondary schools by 2007 | CDO in conjunction with CDG's/LEA | £100 per school per year | Start spring 2003 | CDO | Each autumn 2003 - 2007 |
| 2. Increase the number of schools participating in the National U12 cup competition | 2002 – 18 2007 - 30 | CDO | £250 per year | Start 2003 | CDO | Each autumn 2003 – 2007 |
| 3. Increase the number of schools participating in the National U14 competition | 2002 – 24 2007 - 36 | CDO | £250 per year | Start 2003 | CDO | Each autumn 2003 – 2007 |
| 4. Encourage club/schools links and Sports College cluster in order to provide better facilities and coaching. | Work with 1 new Schools Partnership per year | DCO/CDG's | See 1. | Start 2003 | CDO/CDG's | Each autumn 2003 – 2007 |
| 5. Encourage the introduction of Inter Cricket in schools | Entry into county Inter Comp 2003 – 18 2007 - 30 | CDO/CDG's | £600 per year | Start 2003 | CDO | Each autumn 2003 - 2007 |
| 6. To increase the number of girls playing cricket in secondary schools | Entry into county indoor Inter Cricket competition 2002 – 10 2007 - 20 | CDO/County Women's section/CDG's | | Start 2003 | CDO | Each autumn 2003 – 2007 |
| | | | | | | |

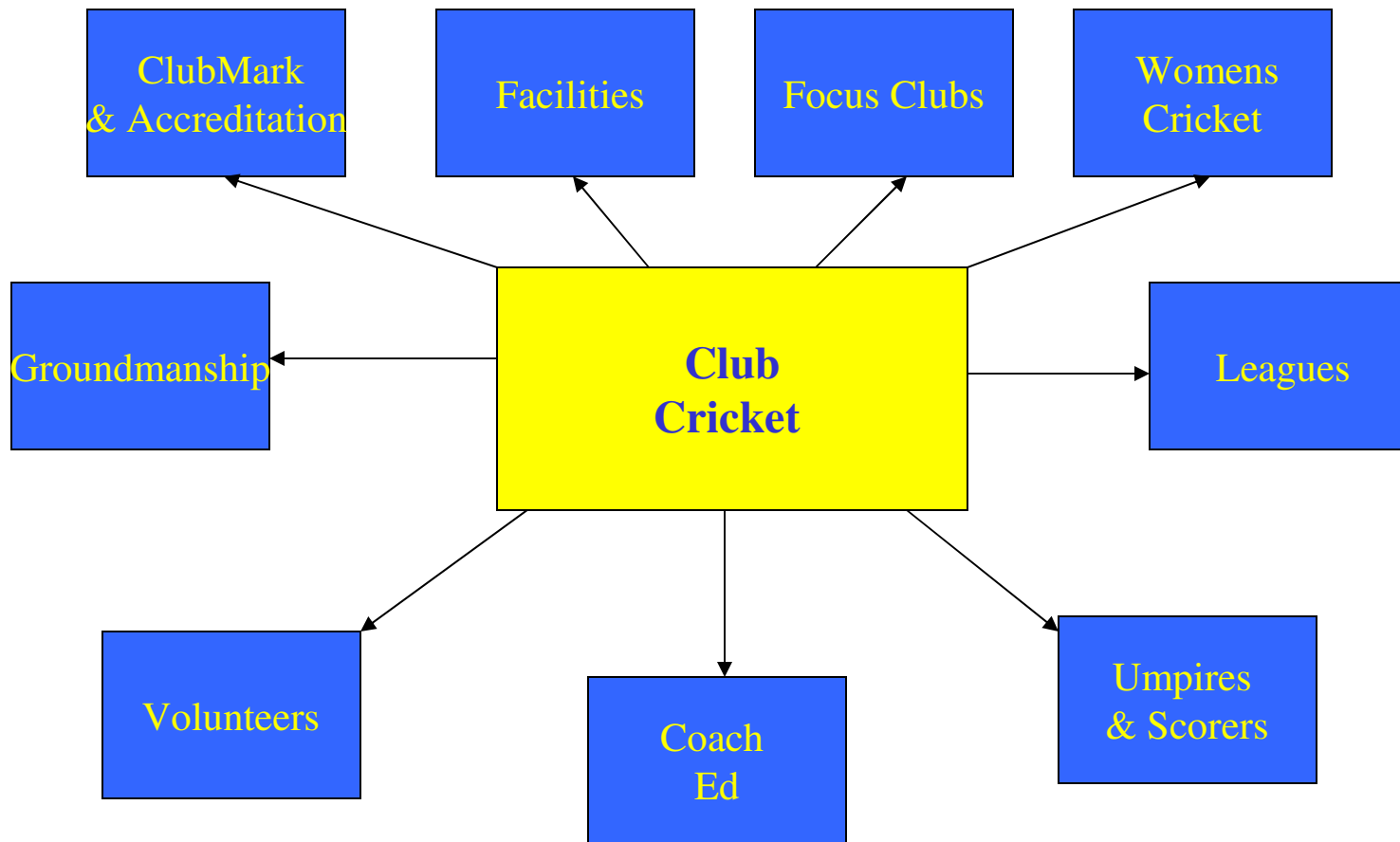
| | | | | | | |
|--|---|------------------------------|---------------|----------------------|-----|-------------------------|
| 7. To provide structured training for teachers to enable them to deliver cricket within the curriculum | 10 teachers per year to deliver these skills | CDO | £100 | Start 2003 | CDO | Each autumn 2003 – 2007 |
| 8. To improve the quality of delivery of cricket coaching within secondary schools | Coaches to have successfully completed the ECB Coaching in Schools Module 2002 – 25 2007 - 70 | CDO/Staff coaches/ DCB CA | £100 per year | Annually 2003 - 2007 | CDO | Each autumn 2003 – 2007 |

Minimum Quality Standards

| Standards Minimum Quality Standards | Current Situation | Gap | Priority |
|---|--|---|---|
| Club/School Partnerships To be driven through District Cricket Development Groups with representation sought from secondary schools on groups | Takes place on a needs led basis No secondary school representation on groups | A coordinated approach to Club/School links through School/Sport partnerships | One partnership per district |
| Coaching Visits Coaching will be delivered by coaches who have successfully completed the ECB Coaching In Schools Module using 'Howzat 2nd Innings' resource | Coaching is being delivered by appropriately qualified coaches using 'Howzat' 2nd Innings resource | | |
| Teacher Training Delivered through ECB six hour Secondary INSET courses to be planned with candidates receiving 'Howzat 2nd Innings' CD-ROM | First course run March 2003 | Minimum one course per year | Teacher training programme in partnership with other educational establishments |
| Coach Training Delivered through the DCB CA Coach Education Programme | One course per year being delivered | | |
| Competitions Increase the level of entry to all relevant county and national competitions | 40% of schools compete in competitions | Certain schools never compete | Target schools via Club/School links, teacher training etc. |
| Facilities Improve and increase access to safe grass and artificial playing surfaces by fostering closer club/school links and the introduction of Flicx pitches in selected schools | Uncoordinated approach with some schools using club facilities | Coordinated approach through NOF bids | See facilities plan |
| Focus Clubs Identify secondary schools in each CDG area and target with involvement of feeder primary schools | Uncoordinated approach | Coordinated approach via School/Sport partnerships | Target schools within School/Sport partnership areas |

Derbyshire Cricket Board

Club Cricket



Derbyshire Cricket Board Development Plan
2002 – 2007

Club Cricket

Aim: To ensure that everybody has the opportunity to play and become involved in the game at club level and that all clubs receive practical help and guidance in order to develop their facilities and coaching expertise.

| Strategy | Success Criteria | Responsibility | Cost | Timescale | Monitoring | Evaluation |
|---|---|---|------------------------|-----------------------------|--|------------------------------|
| 1. Provide opportunities for volunteers to receive training in pitch preparation and turf maintenance | Courses available twice yearly which are easily available to all parts of the county | CDO/DCB Groundsman's Association | £1000 per year | Spring and autumn each year | Groundsmans Association | Autumn each year |
| 2. Assist designated clubs to become involved in pitch assessment scheme | Improved pitch quality Four clubs per year | CDO/Pitch advisor / Groundsmans Association | | Ongoing - 2003 | CDO/Pitch advisor/ Groundsmans Association | Spring and autumn each year |
| 3. Increase the number of level I, II and III coaches | Increase the numbers of qualified coaches Level 1 – 40 coaches per year Level 2 – 15 coaches per year Level 3 – 1 coach per year All clubs with junior sections to have at least one qualified coach by 2006 All junior club members have access to 'Proficiency Awards' coaching through clubs or CDG's | DCB CA | | Ongoing 2003 – 2007 | CDO/DCB CA | Autumn 2003 – 2007 each year |
| | | Clubs/CDG's | £4000 £2100 £400 | Ongoing | CDG's | September each year |
| | | CDG's | | | CDG's | Autumn 2003 – 2007 each year |

| | | | | | | |
|---|--|--|---------------|-------------------|---------------------------------------|--------------------|
| 4. Increase numbers of qualified umpires and scorers | Each CDG area to have: 5 new umpires by 2005 3 new scorers by 2005 | Derby's branch of ACU&S/CDG's Derbyshire County Cricket League Derbyshire Premier League | £100 per year | Ongoing from 2003 | CDO/ACU&S DCB Management Committee | Autumn 2003 – 2007 |
| 5. Allow clubs the opportunity to play at the highest level of which they are capable by providing an effective system of feeder leagues for the existing Derbyshire Premier League | Clubs in all parts of the county to have access to premier league status 2002 – feeder league system in place | DCB Leagues committee | | Ongoing | CDO | Ongoing |
| 6. Provide opportunities for women/girls to play cricket under organised conditions. Recruit female coaches and organise open days at clubs for girls | There is a minimum of one club per CDG area that can offer opportunities by 2004. Expansion of Derbyshire Women's League There is an average of three female coaches in each CDG area and all women's clubs or sections to have a qualified coach Each club-Level1 by 2004 | CDO/DCB Women's section/CDG's/Clubs/Active sports | | Ongoing | CDO/DCB Women's section/CDG's | Autumn 2003 – 2007 |

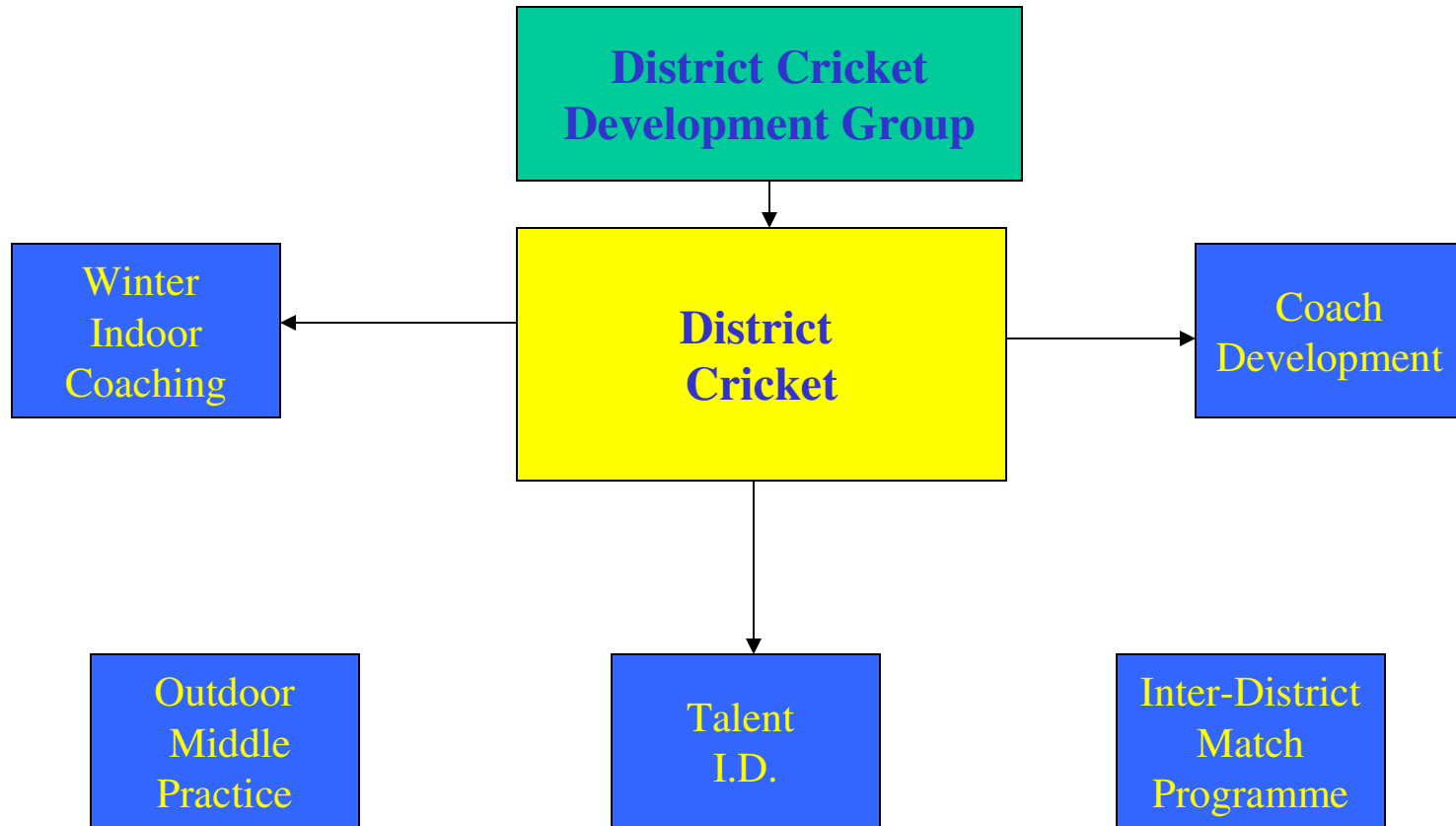
| | | | | | | |
|---|--|--|------------------------|---------------|--|--|
| Identify Focus Clubs for women's/girl's cricket and set up appropriate coaching courses | Each club-Level 2 by 2006 1 or 2 clubs per CDG area which act as a 'centre' for women's/girls cricket | CDG, Women's Committee, CDO, Active Sports Partnership | October 2002 - ongoing | £100 per club | Cricket Focus Group, Women's Committee | Identified already – Lullington, Nutbrook, Denby, Wirksworth, Sawley & Long Eaton Park, Dinting October each year – other clubs |
|---|--|--|------------------------|---------------|--|--|

| | | | | | | |
|--|---|---|--|---------------------|---|--------------------------------------|
| 7. Ensure that there are opportunities for young people to play club cricket at Under 11,13,15 and 17 in all parts of the county | Easy access is available in all parts of the county offering young people playing opportunities for his or her age group. | CDO CDGs/Youth Leagues | | Ongoing | CDO/CDG's | Annually 2003 -2007 |
| 8. Ensure that clubs have true surfaces on which to practice and play | Provide Flicx pitches at selected clubs | CDO | | October 2003 - 2007 | CDO | Each autumn club to keep Flicx diary |
| 9. Provide opportunities for cricketers with disabilities to play cricket under organised conditions. Recruit/train coaches to work with this target group | There is a club in each CDG area that can offer opportunities by 2006. Festivals to be held at clubs | CDO/CDG's/National Disability DO in partnership with Active Sport | | 2003 - 2007 | CDO/National Disability DO/Active Sport Equity Officers | Annually |
| 10. To improve the quality and infrastructure of clubs within the county against set criteria | Number of identified clubs attaining ECB ClubMark accreditation. 2003 – 10 Clubs 2007 – All Clubs with Junior Sections | CDO, CDG's Clubs | | Autumn 2003-2007 | CDO, CDG's | Annually |

Minimum Quality Standards

| Minimum Quality Standards | Current Situation | Gap | Priority |
|---|--|--|--|
| 1. Provide opportunities for IOG training in pitch preparation and turf maintenance | Two Groundsman's associations formed to serve north & south of the county | | |
| 2. Provide clubs access to pitch assessment scheme | Ongoing | | |
| 3. ECB Level 1, 2 & 3 coaching courses | Three Level 1 and one Level 2 run in county each year through DCB CA and Level 3 nominations made to regional and national courses | | |
| 4. ACU & S umpires & scorers courses | Courses run annually by Derbyshire ACU & S | Courses not run in all districts | Encourage clubs via CDG's to run courses in all districts |
| 5. Feeder league system | In place | | |
| 6. Women & girl's cricket | Women's and girls sections established in most districts | No women's and girls cricket center in all districts | Strengthen existing clubs with women's sections and develop women's and girls centers in all districts via CDG's |
| 7. Youth leagues for U11, U13, U15, U17 club cricket | In place | | Emphasis towards U11 hardball cricket |
| 8. Club playing and practice surfaces | See facilities plan | | Priority on focus clubs named in facilities plan |
| 9. Cricketers with disabilities :- Coaching Playing | Uncoordinated approach although festivals take place annually | Coordinated approach with a view to establishing representative squads | Work with Forum to establish a county wide strategy |
| 10. Clubs to work towards ECB ClubMark accreditation | Two clubs accredited and eight clubs working towards accreditation | | Clubs with ClubMark to work with other clubs in districts through CDG's |

Derbyshire Cricket Board District Cricket



District Cricket Development Groups

Current situation:

How they work

There are currently 7 District Cricket Development Groups operating in Derbyshire covering all areas within the county. The 7 groups are nominally the same as the 7 District Cricket Squads (U13 & U15).

Each CDG is at slightly different stages of development depending on when they were established and how well they are supported. All CDGs are now constituted and have their own bank account. Some groups have written successful Awards for All applications.

The ideal 'make-up' of a CDG should be as per the attached sheet. 2 CDGs have a schools rep at the present time and this is seen as a priority for all other CDGs.

CDGs are encouraged to embrace cricket activity and cricket development within District Cricket, Club Cricket, Secondary Schools Cricket, Primary Schools Cricket, Coach Education and Facilities. Although strategies may be set at national and county level, CDGs can have a strong input into local needs and implementation.

How they are managed

On a local level, each CDG has elected officers with the Chairman having overall responsibility for the running of the Group. At a county level, the Focus Group is a sub-committee of the DCB and consists of the 7 CDG Chairmen, a Sports Development Officer Rep, DCB Cricket Development Officer and County Sports Partnership Rep. This group is mainly responsible for District Cricket, although it is hoped that this responsibility will increase in the future.

Future Vision:

How they will work

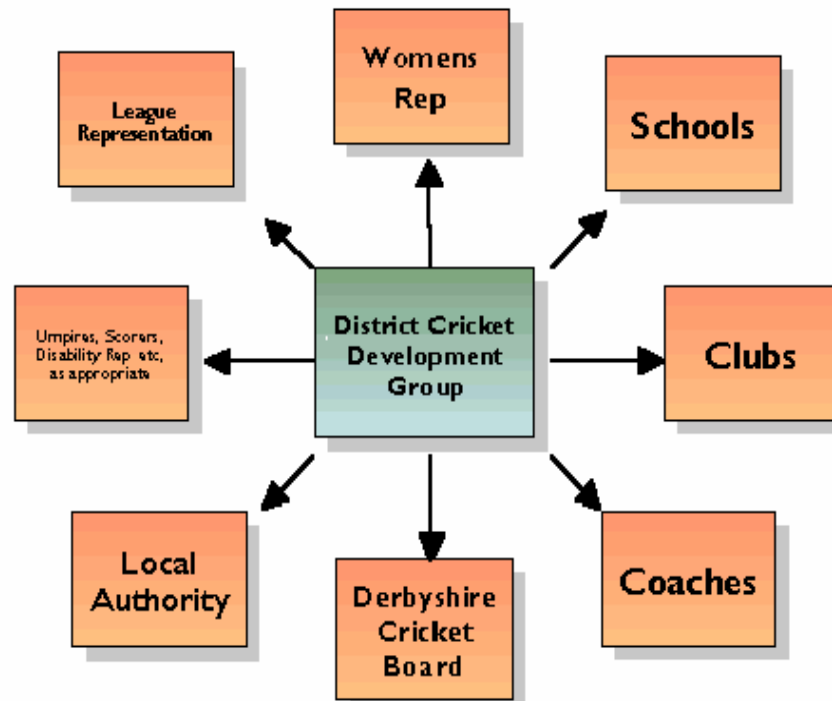
It is hoped that CDGs will grow stronger in terms of membership and responsibility. CDGs will all have development plans and action plans that support the DCB Development Plan. These development plans will be used as a basis to write both Awards for All application and bids to the DCB for annual activity. It is hoped that CDGs will be able to 'shape' and implement all cricket development activity below Representative level.

How they will be managed

As CDGs grow and increase their responsibility, it is planned that the current Focus Group is 'elevated' to become the nucleus of the DCB Management Committee with a greater influence on the strategy and planning for Schools Cricket, Club Cricket, District Cricket, Facilities and Coach Education (see DCB chart).

District Cricket Development Group

- ideal structure -



Derbyshire Cricket Board Development Plan
2002 – 2007

District Cricket

Aim: To provide a comprehensive Talent Identification process and District Cricket coaching and match programme for talented young players to bridge the gap from club to county cricket as part of the Player Development Pathway (Illustrated within Plan)

| Strategy / Scheme | Measurable Criteria | Responsibility | Timescale | Cost | Monitoring | Evaluation |
|--|---|---|-------------------------|---|---|---|
| To drive all District Cricket activity through each CDG | Each CDG to have a Development Plan as a working document | CDG Chairmen, CDO and Active Sports Partnership | Oct 2004 | | Cricket Focus Group | 2 CDGs with development plans Others ongoing |
| 1. Set up a Talent I.D. process in each CDG area to feed into the Player Development Pathway and include final assessment days | Junior Club / School matches are observed and/or lines of communication are such that all suitable players are nominated to CDG / DCB 2002 – Nomination system in place with informal talent ID system 2007 – Comprehensive nomination and talent ID system in place to cover all CDG areas | CDG, CDG – Head Coach, CDO, Schools (as part of CDG infrastructure) | Summer 2003 - ongoing | £4686 per year | CDG, Cricket Focus Group, CDO, Excellence Committee | Ongoing – each year |
| 2. Recruit and train District coaches, incl generic SCuk courses | Each CDG to have a Level 2 (min) with the mandatory generic coaching qualifications working with each District Squad and leading the Talent I.D. process 2002 – Each CDG Squad has a Level 2 Coach 2007 – Each CDG Squad has a Level 2 Coach and a Level 2 leading Talent ID process | CDG, DCB CA | Oct 2003 – then ongoing | Active Sport £1800 per Level 2 Course Generic courses – Partnership Services | CDG, Active Sports Partnership, Cricket Focus Group, DCB CA | Jan 2004 |
| 3. Set up District Squads for boys at U13 and U15 in each of the 7 CDG areas and provide a | A full programme of winter indoor practice, outdoor middle practice and inter District matches at U13 and U15 level. Provide a clear | CDG, CDG Head Coach, CDO, Cricket Focus Group | Summer 2003 | Active Sport £3228 per District per year | Active Sports Partnership, Cricket Focus Group, CDGs | Oct 2003 – then ongoing |

| | | | | | | |
|---|--|--|--|--|--|--|
| structured coaching and match programme | <p>understanding of how District Cricket fits into the Player Development Pathway. A recognised route for players to progress to representative county squads</p> <p>2002 – All 7 CDG Squads have Winter Indoor Practice and inter District Match Prog.</p> <p>2007 – All 7 CDG Squads to have Winter Indoor Practice, Outdoor Middle Practice and inter District Match Prog</p> | | | | | |
|---|--|--|--|--|--|--|

Minimum Quality Standards

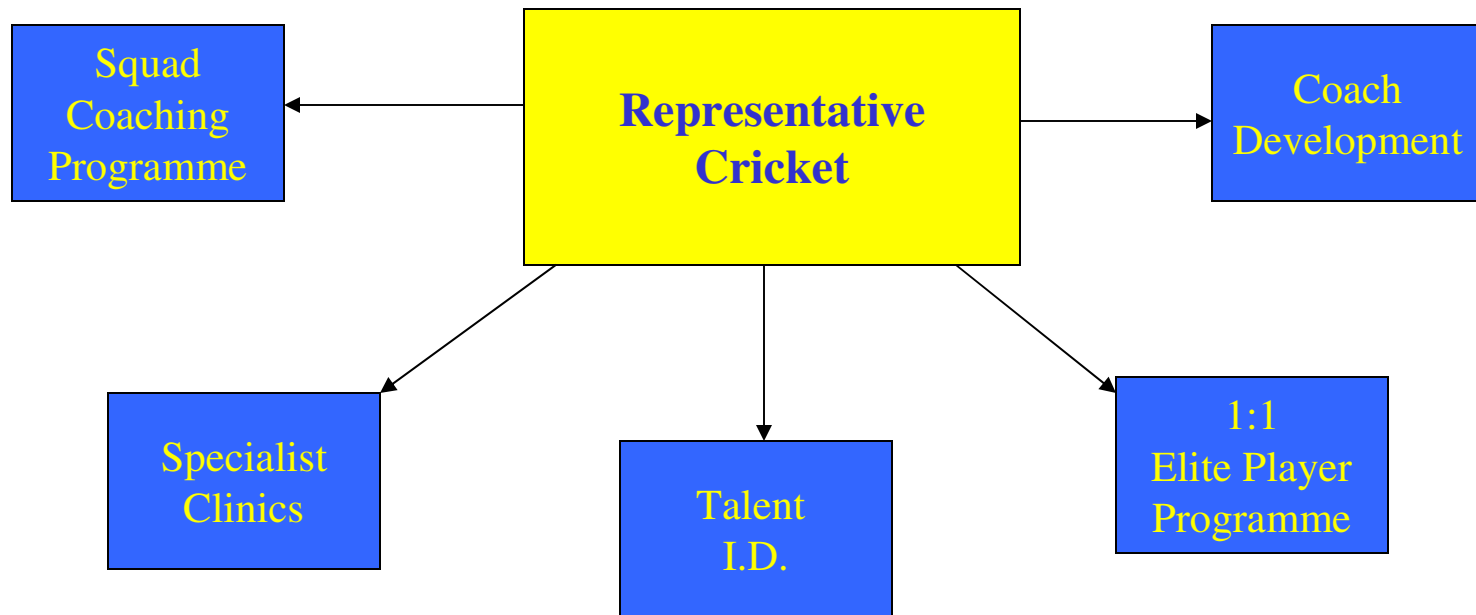
All minimum quality standards for District Cricket will be as per the Development Framework for Cricket in the Active Sports Programme and as outlined within the ECB National Strategy for Cricket.

| Minimum Quality Standards | Current Situation | Gap | Priority |
|---|---|--|--|
| <p>Talent Identification Process</p> <ol style="list-style-type: none"> 1. Co-ordinated by an appointed CDG Head Coach, minimum Level 2 2. Undertaken as an ongoing process over the whole cricket season 3. Inclusive of all schools and club junior sections within a CDG area 4. Encourages feedback and input from club coaches and | <ol style="list-style-type: none"> 1. Uncoordinated approach 2. Nominations are made in June/July each year by clubs & schools but individual nominations can be made anytime 3. In place 4. In place | <ol style="list-style-type: none"> 1. Formalised procedure led by Level 2 Coach in each DCG area 2. Formalised talent I.D. system taking place over summer | <ol style="list-style-type: none"> 1. & 2. Set up a network of Level 2 coaches (1 per CDG area) to observe matches and practice during this summer within talent I.D. programme |

| | | | |
|---|--|---|---|
| <p>teachers</p> <p>5. Includes a means of recording and monitoring players progress</p> | <p>5. Club/School nomination form No talent I.D. analysis or records</p> | <p>5. Talent I.D. criteria Talent I.D. forms</p> | <p>Develop a set of criteria as a benchmark and record/monitoring forms for Level 2 head coaches</p> |
| <p>Coach Education and Development</p> <p>1. Ensure Head coaches are Level 2 qualified</p> <p>2. Ensure all coaches have taken mandatory SCuk courses</p> <p>3. Provide a comprehensive Coach Mentoring Scheme that is accessible to all coaches</p> | <p>All head coaches are Level 2 qualified Majority of district have taken mandatory Scuk courses</p> <p>Pilot schemes in place</p> | <p>Ensuring all district squad coaches take Scuk courses, taking into account changing personnel Comprehensive county wide coach mentoring scheme</p> | <p>Ongoing provision of Scuk mandatory courses</p> <p>Set up coach mentoring scheme (generic) through district sports forum</p> |
| <p>District Squad Development Programme</p> <p>Indoor Winter Coaching</p> <p>1. Led by a minimum Level 2 coach</p> <p>2. Assisted by a minimum Level 1 coach</p> <p>3. Contain 16 players per age group per CDG squad</p> <p>4. Be delivered at facilities conforming to ECB specifications</p> <p>5. Adhere to the syllabus outlined in the Active Sport Cricket framework</p> <p>6. Last for 24 hours between Jan and April</p> | <p>In place</p> <p>In place</p> <p>In place</p> <p>See facilities plan</p> <p>In place</p> <p>In place</p> | <p>See facilities plan</p> | <p>See facilities plan</p> |

| | | | |
|--|--|---|---|
| <p>Outdoor Middle Practice</p> <ol style="list-style-type: none"> 1. Led by a minimum Level 2 coach 2. Assisted by a minimum Level 1 coach 3. Contain 16 players per age group per CDG squad 4. Be delivered at outdoor facilities conforming to ECB specifications 5. Include tactical match situations, fielding drills and quality net practice <p>Match-play Programme</p> <ol style="list-style-type: none"> 1. Minimum of 2 and maximum of 6 matches per squad 2. 40 overs U13 & 45 overs U15 3. Flexible match formats to allow for coaching input 4. Form part of the Player Development Pathway and selection for County Rep Squads 5. Take place at pitches conforming to ECB specifications | <p>Those CDG squads who have outdoor middle practice are led by Level 2 coach</p> <p>In place</p> <p>See facilities plan</p> <p>No set syllabus</p> <p>In place</p> <p>In place</p> <p>1 innings pre meal break with 1 drinks interval, 1 after with 1 drinks interval In place</p> <p>See facilities plan</p> | <p>Some squads not receiving outdoor middle practice</p> <p>See facilities plan</p> <p>A uniform syllabus for outdoor middle practice</p> <p>Longer drinks break to allow coaching input</p> <p>See facilities plan</p> | <p>Build in outdoor middle practice for all CDG squads</p> <p>Write syllabus for outdoor middle practice</p> <p>Change match format to include tactical break</p> |
|--|--|---|---|

Derbyshire Cricket Board Representative Cricket



Derbyshire Cricket Board Development Plan
2002 – 2007

Representative Cricket

Aim: To identify talented players through the Player Development Pathway and provide the best possible coaching and match play opportunities on the best possible facilities.

| Strategy / Scheme | Measurable Criteria | Responsibility | Timescale | Cost | Monitoring | Evaluation |
|--|---|--|--|-------------|---------------------------|---|
| 1. Set up a Talent I.D. process through the Player Development Pathway | Number of Players who come into county squads from District Cricket, Trials etc through the Player Development Pathway. 2002 – 2 per squad approx 2007 – 3 per squad approx | CDO, Excellence Committee, CDG Head Coaches | Oct 2002 - ongoing | | CDO, Excellence Committee | Sept each year |
| 2. To provide a comprehensive and ever developing Squad Development Programme for boys and girls including Indoor and Outdoor coaching and Summer Match programme by: Utilising the latest techniques and sports science to support and improve the programme including the LTAD model Providing top quality coaching by ensuring all age group squads are led by a Level 3 coach. Providing a continual communication and | Improve the standard of the county representative squads. Increase the number of young players 'graduating' to the Derbyshire Premier League. Increase the number of players selected for Regional representation and above 2002 – 10 players in Midlands squad training 2007 – 15 players in Midlands squad training 2002 – 15 players (U16-U21) playing in the Premier League 2007 – 22 players playing in the Premier League | Excellence Committee, Level 3 Coaches, CDO | Oct 2002 – ongoing Ongoing Ongoing | | CDO, Level 3 Coaches | Ongoing Formal review Sept each year |

| | | | | | | |
|---|--|--|-----------------|--|--|--|
| <p>development process to ensure managers and coaches provide continuity in practice and evaluations</p> <p>Assessing and evaluating the balance between match play and training in the summer</p> <p>Utilising match play and training facilities that conform to ECB Technical Specifications</p> | | | <p>Oct 2003</p> | | | |
|---|--|--|-----------------|--|--|--|

| | | | | | | |
|---|--|--|---|---------------------------|--|--|
| <p>3. To provide high quality specialist clinics for selected players in each squad using Level 3 coaches and suitably qualified DCCC professionals in Nov and Dec. Clinics to include: Wicket-keeping, Fast Bowling, Spin Bowling, Batting v Pace, Batting v Spin, Captaincy, Psychology etc</p> | <p>Performance of selected players during the summer. Number of selected players that progress to the Academy (Elite Player Programme) Improvements that are made against players profiles</p> <p>2002 – 4 players progressed from clinics in 2001 to Elite Player Programme in 2002 2007 – 5 players progress from clinics to Academy</p> | <p>Excellence Committee, Level 3 Coaches, CDO</p> | <p>Oct 2002 - ongoing</p> | | <p>Excellence Committee, CDO</p> | <p>Feb each year</p> |
| <p>4. To provide 1:1 coaching for the most talented young players under the banner of the Elite Player Programme (to become the mini-Academy as & when DCCC has an ECB accredited Academy)</p> | <p>Numbers of players gaining First class contracts Number of players representing DCCC 2nd X1 Players performances during the season Players gaining selection at regional level and above Number of players moving on to the Academy from the mini academy 2002 – 3 players from Elite Player Programme playing for DCCC 2nd X1 2007 – 5 players from Academy playing for DCCC 2nd X1</p> | <p>Excellence Committee, DCCC Coach, CDO, Academy Director</p> | <p>Elite Player Programme Oct 2002</p> <p>Mini Academy Oct 2004</p> | | <p>CDO, Excellence Committee, DCCC Coach, Academy Director</p> | <p>Sept each year</p> |
| <p>5. Recruit and train county squad</p> | <p>Each Squad to be coached by a Level 3 coach in winter</p> | <p>DCB CA, Excellence Committee, CDO</p> | <p>Oct 2005 – then ongoing</p> | <p>Level 3 – £200 per</p> | <p>DCB CA, CDO</p> | <p>Current – Level 3 coaches with boys</p> |

| | | | | | | |
|---|--|----------------------|-------------------------|--|----------------------|---|
| coaches and managers | and summer. Managers to have access to CPD opportunities as required (eg Communication Skills for Cricket Coaches, First Aid etc). Coaches and Managers to be ECB Licenced and have access to a Coach Mentoring Scheme 2002 – 4 Level 3 Coaches working with squads 2007 – 5 Level 3 Coaches working with squads 2007 – coach & manager mentoring scheme to be in place | | | candidate Workshops Various Coach Mentoring Active Sport Programme | | U13, U14, U15, U16 & U17 squads in winter & summer. Also with U10, U11 & U12 squad in winter. Oct each year Review Oct 2006 |
| 6. Seek additional sponsorship to ensure sustainability and further development | Sustainability of programme and development of new initiatives | Excellence Committee | Oct 2003 – then ongoing | | Excellence Committee | Oct 2004 – then ongoing |

Minimum Quality Standards

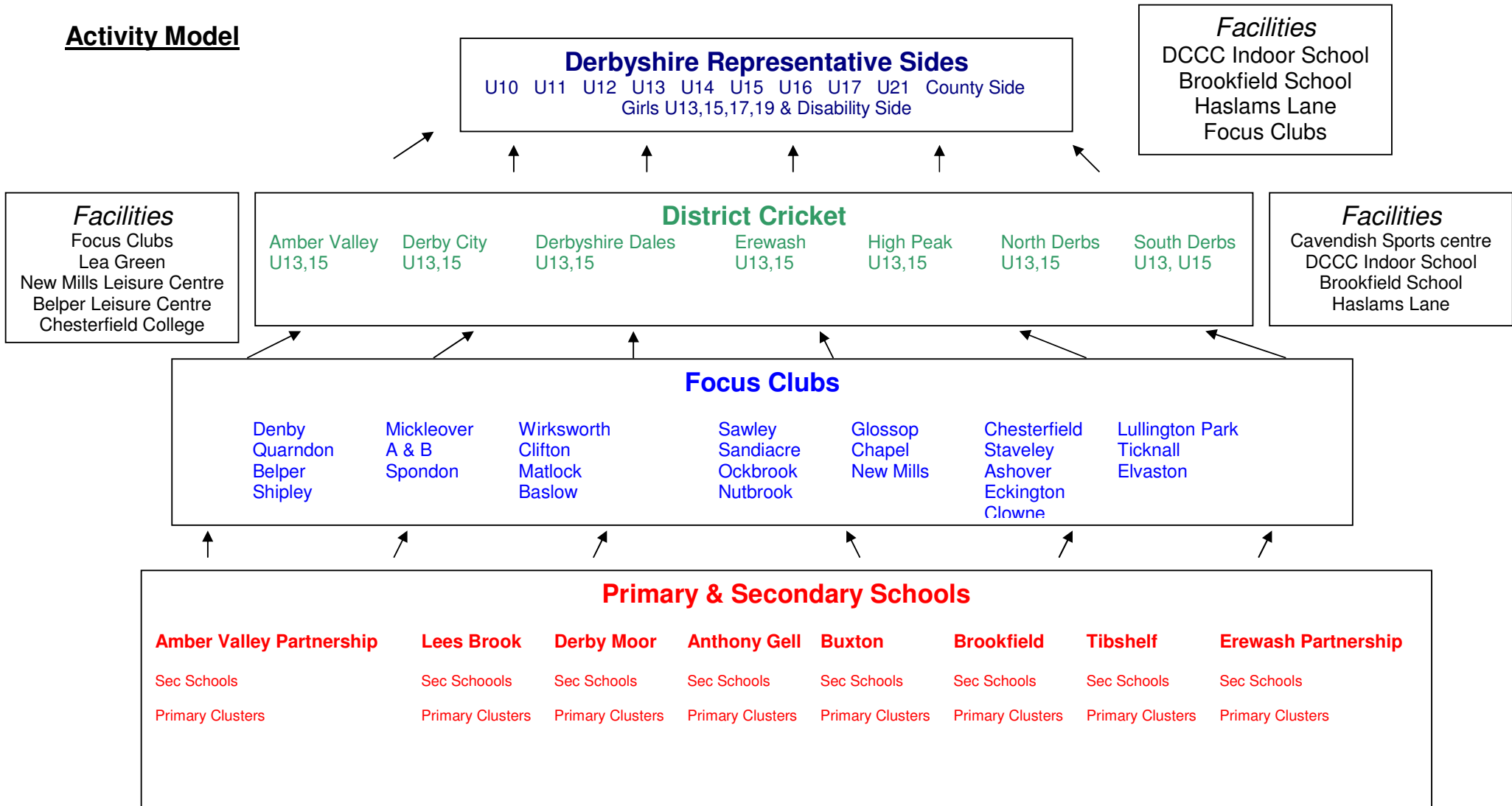
All minimum quality standards for Representative Cricket will be as per the Development Framework for Cricket in the Active Sports Programme and as outlined within the ECB National Strategy for Cricket.

| Minimum Quality Standards | Current Situation | Gap | Priority |
|---|--|---|----------|
| <p>Talent Identification Process</p> <ol style="list-style-type: none"> 1. Co-ordinated by CDO and led by a Level 2 Coach within each CDG area 2. Undertaken as an ongoing process over the whole year 3. Inclusive of all District Cricket within each CDG area 4. Encourages input and feedback from CDG Head Coaches 5. Focus's on U13, U15 and U17 age groups for boys and girls 6. Includes a means of recording and monitoring players progress | <p>In place</p> <p>In place</p> <p>In place</p> <p>In place</p> <p>In place</p> <p>Database – ongoing in place CDG head coaches provide feedback information on each player at Christmas</p> | <p>Feedback/monitoring forms on players in district squads in April & winter county squads in April</p> | |

| | | | |
|--|---|---|--|
| | | | |
| <p>Squad Development Programme</p> <ol style="list-style-type: none"> 1. Coordinated by CDO and Excellence Committee 2. Led by Level 3 Coaches or above 3. Focus's on U13, U15 and U17 as key age groups for boys and girls 4. Is delivered at indoor facilities conforming to ECB specifications 5. Is delivered at outdoor facilities conforming to ECB specifications 6. Includes a means of profiling and monitoring players progress through Player Profiles etc 7. Focuses on technique and includes elements on fitness, psychology, tactical awareness and lifestyle management 8. Match formats to conform to ECB competitions, directives and guidelines 9. Addresses a balance between match-play and training during the season | <p>In place</p> <p>In place</p> <p>In place</p> <p>See facilities plan</p> <p>See facilities plan</p> <p>U14 & U15 complete profiles</p> <p>In place Exact syllabus dependent on age group</p> <p>In place</p> <p>Very few sessions of training organised during season</p> | <p>All other squads</p> <p>Coming into line with new initiatives etc.</p> <p>Not enough balance between match play and training</p> | <p>Develop and utilise a player profile and monitoring system for all players</p> <p>Plan programme recognising LTAD model</p> <p>Plan match programme to allow for training during season</p> |
| <p>Specialist Clinics</p> <ol style="list-style-type: none"> 1. Take place in Nov and Dec each year | <p>In place</p> | | |

| | | | |
|--|--|--|--|
| <ol style="list-style-type: none"> 2. Led by Level 3 Coach + DCCC professionals support 3. Aimed at specific selected players | <p>In place</p> <p>In place</p> | | |
| <p>Elite Player Programme / Mini Academy</p> <ol style="list-style-type: none"> 1. Co-ordinated by CDO 2. Led by level 3 coaches 3. Takes place Jan – August 4. Makes use of video analysis and Quintic 5. Makes use of up to date sports science support 6. Based on and recorded in line with individual player profiles 7. Made available to the most talented players | <p>In place</p> <p>In place</p> <p>Jan – April</p> <p>In place</p> <p>Some links with Loughborough University</p> <p>In place</p> <p>Profiles & video support</p> <p>In place</p> <p>Recommendations/nominations made through excellence committee</p> | <p>Summer support</p> <p>Lack of formalised links with Loughborough University & lack of links to Derby University</p> | <p>Extend programme to support players during season</p> <p>Links with sports science departments at Loughborough & Derby Universities</p> |
| <p>Coach Education & Development</p> <ol style="list-style-type: none"> 1. Ensure Squad Coaches (winter & summer) are Level 3 qualified 2. Managers to have attended Cricket Junior Managers Course 3. Coaches and Managers to be First Aid trained 4. Provide a comprehensive Coach Mentoring Scheme that is accessible to all Coaches and Managers | | | |

Activity Model



Derbyshire Cricket Board Facility Development Strategy

March 2003

Executive overview

This document now provides an all-embracing framework for the development of cricket facilities in the county of Derbyshire in the short and medium term and as such now recognises the strategic priorities and plans identified in the Derbyshire Cricket Boards March 2003 Development Plan.

It describes the various programmes offered by the Derbyshire Cricket Board (DCB) and its partners in the facilities arena and shows how this strategy fits with other significant strategy documents both within cricket and within sports development.

1 Structure of the Strategy

The County Facility Development Strategy has been prepared to facilitate consistency of approach by all partners and to minimise duplication. It follows the England & Wales Cricket Board's National Strategy document in that it recognises the need to:

- Have clear County outcomes
- Be flexible to allow specifically local priorities to be met

The Strategy also recognises the key role of partner agencies to the success of the plan, notably: the Derbyshire & Peak Park Sport & Recreation Forum, Sport England, Local Authorities and Local Education Authorities, sponsors, The Cricket Foundation, DCB's Groundsman's Association, Derbyshire County Cricket Club and the many clubs, coaches and volunteers operating throughout Derbyshire.

The Strategy has been written to complement and contribute to a number of national and other strategies whilst simultaneously combining more local initiatives to produce an overarching plan that all parties can own and subscribe to.

The key strategies that this plan must fit with are:

1. The ECB Facilities and National Development Strategy
2. The DCB Development Plan
3. The Derbyshire Improving Playing Pitches Initiative (Green Spaces Programme)
4. The ECB Groundsmanship Advisory Initiative
5. Local Authorities' Facility Plans
6. Awards for All and other funding streams
7. Elements of the D&PPS&RF forthcoming Facility Strategy

This strategy therefore has three sections:

1. A review of current audits, strategies and plans that impact on the development of facilities for cricket in Derbyshire including a review of work done on a strategy for indoor cricket
2. A statement of the DCB's priorities for facility development
3. Strategy Recommendations

2 Strategies and programmes

This section describes the key strategies and programmes that will significantly impact on facility development for Cricket in Derbyshire.

2.1 ECB Facilities Strategy

Priorities

| | |
|------------------|---|
| NATIONAL: | Development of excellence Investment in Grass playing surfaces |
| SCHOOLS: | Access to safe playing and practice surfaces |
| CLUBS: | Good quality grass pitches Artificial pitches Minimum standard changing & support facilities |
| DISTRICT: | Good quality grass pitches Safe indoor hall with nets |
| REPRESENTATIVE : | Good quality grass pitches Access to Sports Science facilities Access to specialist indoor cricket centre Access to scoreboard, covers, sightscreens Minimum standard changing facilities |

All of the above to be developed to the relevant ECB Specification

Role of DCB

County Boards to determine facility priorities with advice from ECB, Sport England and input taken from District Cricket Groups.

Tools

County Sports Facilities Advisory Service
Capital Development Fund
Technical briefs
Accreditations
Technical innovations

ECB Pitch Initiative – as part of a pilot project DCB have been able to support 7 Club ground improvement schemes and to place 20 plastic modular FLICX pitches in various sites around the county.

Future impact

DCB to determine a rolling implementation plan of top priorities based on County Board priorities and ECB priorities until 2007

2.2 The DCB Development Plan

Priorities

| | |
|----------------|---|
| SCHOOLS | Safe environment Professional support to teachers School/club links |
| CLUBS | Priorities Opportunities for all Volunteer support Structured coaching & competitive opportunities Access to Accreditation scheme Access to good quality playing & practice facilities Media exposure |
| DISTRICT | Structured cricket activities Quality coaching and competitive opportunities |
| REPRESENTATIVE | Optimum services & facilities Future County Academy |
| FACILITIES | The best available indoor & outdoor facilities Centres of Excellence (Indoor and Outdoor) |

Role of DCB

Building partnerships
Providing a professional lead
Proactive decision making
Objective approach
Identifying, reviewing and evaluating strategic priorities

Tools

Business Development Manager
Cricket Development Manager
Pitch Advisers
Professional infrastructure
Partnerships
Limited funding

Future impact

The Development Plan will lead and inform all cricket development within the county until 2007

2.3 Derbyshire Improving Playing Pitches Initiative (DIPPI)

Priorities

Hockey, Football, Rugby and Cricket
Bringing grass pitches into use – new, reclaimed or refurbished

Role of DCB

DCB Business Development Manager asked to contribute to strategic priority setting for project and in supporting Clubs to bid for funding.

Tools

In excess of £400,000 in Derbyshire for the development of County significant Cricket and Rugby pitches in 2003.

Future impact

Work should begin on the projects of County significance identified by the DIPPI process in Spring 2003. Any projects of District significance that seek to access this fund will have to do so through the Derbyshire and Peak Park Sport and Recreation Forum's Facility Group.

The initiatives for which the DCB are seeking support for its partners are:

- The development of a new match pitch and grass practise facility at Brookfields School, Chesterfield to act as a Northern Development Centre for County significant programmes and as a potential development facility for Chesterfield Cricket Club
- The development of a new match pitch and grass practise facility at Derby Rugby Club's new ground (Haslam's) will act as a Southern Development Centre for County significant programmes and as a key centre for the development of Women's Cricket
- The development of new match pitches and grass practise facilities at Denby CC, Clay Cross CC and Alvaston & Boulton CC will provide much needed facilities for both clubs and communities.

2.4 The ECB Groundsmanship Advisory Initiative**Priorities**

Minimum quality performance standards
Consistent advice across England and Wales
Active response from clubs
Higher profile for groundsmanship
Accurate assessment of priority sites
Identified costs
Proactive link between professional and voluntary sectors
Support for Southern and Northern Groundsmans Associations in Derbyshire

Role of DCB

Identify and recruit Pitch Advisers
Fully embrace the work of the Pitch Advisers
Development of Southern and Northern Groundsmans Associations in Derbyshire.

Tools

Two fully trained Pitch Advisers now in place
Lottery funding for the upgrade of seven pitches is now in place and clubs have been selected and the improvement process has now started.

Future impact

Future developments will only be supported by the DCB (and its funding partners) when a Ground Cricket Report on the site has been completed by a Pitch Adviser and the development is part of the DCB Development Plan

2.5 Local Authorities' Facility Plans

Priorities

There are 9 Districts within Derbyshire with a variety of political profiles and sports development infrastructures. This inevitably means that their priorities will differ. However, it is safe enough to assume that each District will:

- Seek to benefit its own community as a priority
- Be short of resources
- Be open to working in partnership with Governing Bodies of sport
- Wish to prioritise areas of disadvantage

Role of DCB

DCB must seek to influence the Facility Plans of each of these valuable partners by encouraging District Cricket Development Groups to carry out audits, prioritise development and work in partnership with local sports development professionals

Tools

Membership of Derbyshire & Peak Park Sport & Recreation Forum
The ability to build partnerships

Future impact

Developments of district significance should be identified in partnership with district sports development professionals and delivered in partnership with the authority involved. As DIPPI has identified and hopefully dealt with playing pitch developments of County significance any future playing pitch developments will, by definition, require input from the Local Authority. As most built facility development requires Lottery funding, which is largely dependent on Local Authority support, it is clear that the potential future impact of Local Authority Facility Plans is huge.

2.6 Awards for All

Priorities

Children and Young People
Black & minority ethnic communities
People with disabilities and/or their carers
Older people
Groups in the most deprived rural communities
Groups in the most disadvantaged areas in the region

Role of DCB

Support clubs and other constituted groups to access this funding opportunity

Tools

£500 to £5000 is available to community groups for specific projects that meet highly targeted parameters

Future impact

Changes to the structure of Awards for All will make it harder to access in future but the fund will nevertheless be a significant tool in the sports development arena and will need to recognise/support any funding that becomes available for club development

2.7 Sportsmatch

Priorities

Encouraging increases in sports sponsorship
Schools
Women & girls
Disability groups
Ethnic minorities

Role of DCB

Advising and encouraging clubs and constituted groups to use this funding

Tools

£3.5 million of government funding per annum is distributed by the Institute of Sports Sponsorship to grass roots, not for profit, sports organisations. Grants of £1000 (£500 for schools) to £50000 are available to match income from sponsors.

Future impact

This programme enables clubs to double any significant sponsorship. It is used extensively in other sports and could have major impact within Derbyshire Cricket.

3 Audits

A number of audits have been or are being carried out. Evidence from these audits will be key to future strategic development.

3.1 DCB Indoor Cricket Facilities Strategy

Scope of audit

This audit identifies all existing and planned facilities where indoor cricket training can be accommodated.

It includes schools, leisure centres and both public and private centres

Findings

There is a good geographical spread of low grade indoor facilities
Rural communities of Derbyshire Dales and High Peak are least well served
A significant number of these facilities need to be brought up to TS2* standard
There is a need for a District and Representative level facility in the north of the County to match that being planned at the County Ground in Derby

Recommendations

DCB should support DCCC in their intent to build an Indoor School in Derby
Local Cricket Development Groups should include the findings of the County Audit in their District Plans
DCB should seek to influence the Derbyshire & Peak Park Sport & Recreation Forum's forthcoming Facility Strategy to ensure that it includes a suitable indoor facility in the north of the County

3.2 D&PPS&RF/KKP Audit

Scope

Derbyshire & Peak Park Sport & Recreation Forum have recently commissioned a full audit of sports facilities in Derbyshire from Knight Kavanagh Page (KKP). Cricket was one of the sports audited and it can be expected that a complete audit of playing, training and ancillary facilities will soon exist.

Findings

Only draft findings are currently available (attached) which need to be ratified district by district.

Recommendations

District Cricket Groups should seek to contribute to the process of checking the audit for accuracy and interpretation
DCB should seek to influence strategy development that flows from the completion of the audit

3.3 DCB Clubs audit

Scope

Based on a 1999/2000 audit of clubs, schools and leisure facilities this audit collects data on pitches, outfield, equipment and facilities as well as contact details and directions to the ground.

Findings

At this stage the data is both so patchy and in such a raw form as to make it difficult to draw any firm conclusions

Recommendations

That District Cricket Groups use the DCB Audit format to collect data and to cross check against the KKP audit. Thereafter the KKP data should be used as a base for strategic work by all partners

That DCB consider funding the completion and regular updating of its more comprehensive club database (possibly as part of the Board's expanding internet presence) as a service to District Cricket Groups and their partners

4 Conclusions

- The District Cricket Groups input is fundamental to the successful generation of a coherent Facility Development Strategy for the County.
- ECB and the First Class Counties can be expected to ensure that sufficient national level facilities exist and the DCB must take responsibility for ensuring that a strategy exists that provides sufficient facilities to meet County plans. At District level it is clear that District Cricket Groups are one of the vehicles for ensuring that Facility Action Plans are drafted and delivered.
- The Local Authorities and Local Education Authorities within the County are key to this process and every effort must be made by DCB to engage them through the structures and processes of the Derbyshire & Peak Park Sport & Recreation Forum
- While there is a clear evidence to support the strategic development of indoor facilities DCB need comprehensive data on the number and status of out door pitches and facilities
- The DIPPI project will ensure that County significant pitch developments are addressed. This should be followed by similar facility development.

DCB must define, in the Facility Development Strategy those clubs and indoor and outdoor facilities that are needed to develop performance and excellence coaching and representative cricket in line with the minimum ECB standards. Those clubs and facilities are now defined in the attached Appendices.

Strategy Recommendations

1. DCB should take the earliest opportunity to extract all cricket data from the completed KKP audit and, using the priorities indicated in this document, draft a Facility Action Plan for the next 3 years.
2. DCB should continue to support Derbyshire County Cricket Club in their intent to build an Indoor School in Derby
3. Local Cricket Development Groups should include the findings of the County Audit in their District Plans and input to their facility improvement plan.
4. DCB should seek to influence the Derbyshire & Peak Park Sport & Recreation Forum's forthcoming Facility Strategy to ensure that it includes a suitable indoor facility in the north of the County
5. District Cricket Groups should seek to contribute to the process of checking the audit for accuracy and interpretation
6. DCB should seek to influence strategy development that flows from the completion of the audit
7. District Cricket Groups should use the DCB Audit format to collect data and to cross check against the KKP audit. Thereafter the KKP data should be used as a base for strategic work by all partners
8. DCB should consider funding the completion and regular updating of its more comprehensive club database (possibly as part of the Board's expanding internet presence) as a service to District Cricket Groups and their partners
9. DCB should continue to contribute to the DIPPI process and seek to implement the D&PPS&RF Cricket Pitch Development Strategy.

Appendix 1

Indoor Facility Strategic Development Priorities

The attached details those existing facilities that will be used to deliver the Derbyshire Cricket Boards March 2003 Development Plan and identifies the areas within those centres that need developing to meet the minimum ECB Indoor Specifications.

| Venue | Current Facilities | Development Priority |
|--|--|---|
| New Mills Leisure Centre | Basic Medium Standard Two Lane facility approx. 20 years old. | Improved matting, netting and lighting that meets ECB TS3 Specification |
| Belper Leisure Centre | Basic Medium Standard Two Lane facility approx. 20 years old. | Improved matting, netting and lighting that meets ECB TS3 Specification |
| Chesterfield College | Basic Medium Standard Two Lane facility approx. 20 years old. | Improved matting, netting and lighting that meets ECB TS3 Specification |
| Cavendish School or West Park Leisure Centre | Basic poor standard Four/ Two Lane facility approx. 20 years old | Improved matting, netting and lighting that meets ECB TS3 Specification |
| Chellaston School | Modern High Standard Two Lane Facility approx. 4 years old | Facility meets ECB TS3 Specification |
| Lea Green Sports Centre | Recently renovated Four Lane facility approx. 40 years old. | Facility meets ECB TS 3 Specification |
| Derbyshire County Cricket Club | State of the Art facility to be completed in 2004 | Facility built to ECB TS3 Specification |
| Northern Indoor Cricket Facility | Does not exist | Needs to be developed within the County Sports Development Plan |

Appendix 2

Outdoor Facility Strategic Development Priorities

The attached details those clubs, schools and development centres that are currently planned to be used by Derbyshire Cricket Board for both Representative and/or District Cricket matches and practise.

Consequently these are the priorities, within our identified Focus Clubs, for further development from the capital and revenue sources identified previously in this strategy.

| Venue | Match Suitability | Practise Facilities | Improvements needed and funding route |
|--------------------------------------|--|---|--|
| Brookfields School | Committed. County and District Matches | Committed. County and District. | Green Spaces Programme now approved to develop this site as the new Northern Development Centre. |
| Haslam's (Derby Rugby Football Club) | Committed County and District Matches. | Committed. County and District | Green Spaces Programme now approved to develop this site as the new Northern Development Centre. |
| Lullington Park CC | Acceptable for County and District Matches | Grass and Non-turf nets and Flicx available | Club Development initiatives to maintain current standard |
| Ticknall CC | Acceptable for County and District Matches | Non-turf nets available | Any available funding to target grass nets |

| | | | |
|-------------------------|--|---|--|
| Elvaston CC | Acceptable for County and District Matches | Non-turf nets and Flicx available | Club Devt. Initiatives to maintain standard but an additional pitch is should be targeted |
| Mickleover CC | Acceptable for County and District Matches | Non-turf nets and Flicx available | Club Devt. Initiatives to maintain standard but grass practise and additional pitch should be targeted |
| Alvaston and Boulton CC | Acceptable for County and District Matches | Turf, Non-Turf and Flicx available | Green Spaces programme is now approved to provide an additional pitch and more grass nets |
| Spondon CC | Acceptable for County and District Matches | Non-Turf match and practise and Flicx available | Club Devt. Initiatives to maintain standard with support being given in move to a larger ground. |
| Sawley CC | Acceptable for County and District Matches | Non Turf match and practise available | Club Devt. Initiatives to develop existing facilities |
| Sandiacre CC | Acceptable for County and District matches | Non-Turf match and practise available | Club Devt. To support existing facilities with support being given to grass practice. |

| | | | |
|---------------|---|---------------------------------------|--|
| Nutbrook CC | Acceptable for County and District matches | Non-Turf practise and Flicx available | Club Devt. To support existing |
| Ockbrook CC | Acceptable for County and District Matches | Non-Turf practise and Flicx available | Club Devt.to support existing targeting grass nets |
| Denby CC | Acceptable for 2 nd XI, County Rep. And District Matches | Non-Turf practise and Flicx available | Green Spaces Programme is now approved to provide an additional pitch and grass practice |
| Quarndon CC | Acceptable for County and District Matches | Non-Turf practise and Flicx available | Club Devt to support existing targeting grass nets |
| Belper CC | Acceptable for County and District Matches | Non-turf practise available | Club Devt to develop existing targeting |
| Shipley CC | Acceptable for County and District Matches | Non-Turf practise available | Club Devt to develop existing targeting grass practice and an additional ground. |
| Wirksworth CC | Acceptable for County and District Matches | Non-Turf practise and Match available | Club Devt to review grass practise and additional ground |
| Clifton CC | Acceptable for County and District Matches | Non-Turf practise available | Club Devt to review grass practise and additional ground |

| | | | |
|-----------------------|--|---------------------------------------|--|
| Matlock CC | Acceptable for County and District Matches | Non-Turf practise available | Club Devt. To review grass practise and additional ground |
| Baslow CC | Acceptable for County and District Matches | Non-Turf practise available | Club Devt to maintain existing and review grass practise. |
| Glossop CC | Acceptable for 2 nd XI, County Rep and District Matches | Non-Turf practise and Flicx available | Club Devt to maintain existing and target grass practise and an additional ground |
| New Mills CC | Acceptable for County and District Matches | Non-Turf practise available | Club Devt to maintain existing and target grass practise |
| Chapel-en-le-Frith CC | Acceptable for County and District Matches | Non-Turf practise available | Club Devt to maintain existing and target grass practise |
| Chesterfield CC | Acceptable for 2 nd XI, County Rep and District Matches | Turf nets available | Club Devt to maintain existing but target development of the a new ground at Brookfields School as appropriate |
| Staveley CC | Acceptable for County and District matches | Non-Turf practice available | Club Devt to maintain existing and target grass practise |

| | | | |
|--------------|--|------------------------------|--|
| Ashover CC | Acceptable for County and District matches | Non –Turf practice and Flicx | Club Devt to maintain existing and target grass nets |
| Eckington CC | Acceptable for County and District Matches | Non-Turf practise available | Club Devt to target pitch and practise improvements |
| Clowne CC | Acceptable for County and District matches | Non-Turf practise available | Club Devt to maintain existing and target grass practise |